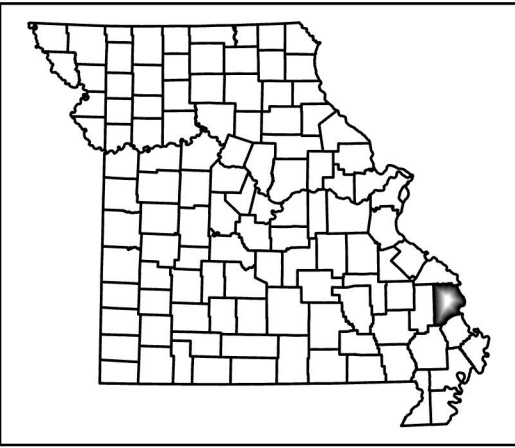
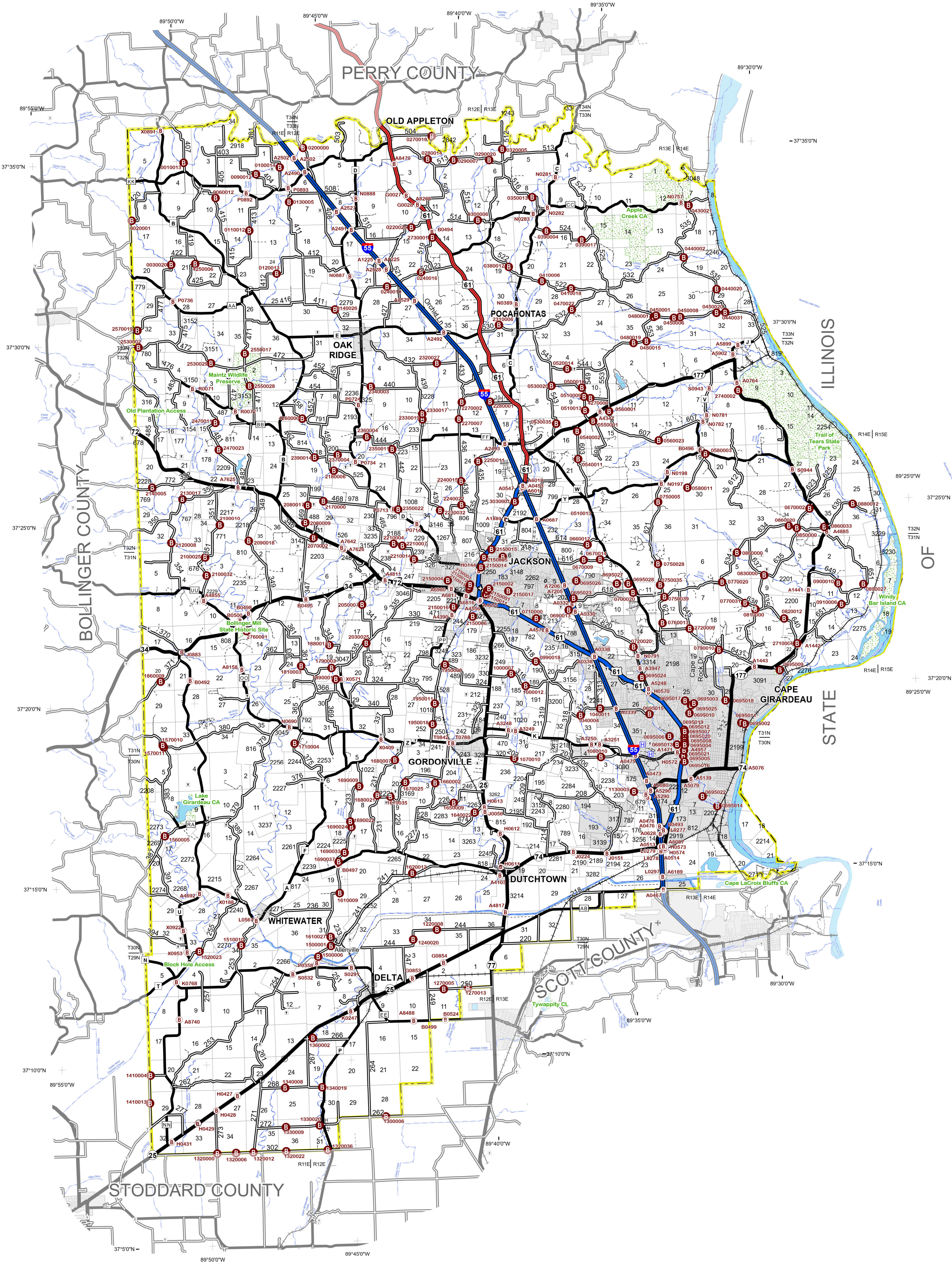


| | | | | | |
|--|---------------------------|--|-----------------------|--|------------------------------|
| | INTERSTATE | | PRIVATE OR OTHER ROAD | | AIRPORT |
| | INTERSTATE LOOP | | KATY TRAIL | | HOSPITALS |
| | US HIGHWAY | | RAILROAD | | CEMETERY |
| | US HIGHWAY (DIVIDED) | | RIVER OR STREAM | | OTHER CITIES AND TOWNS |
| | STATE NUMBERED HIGHWAY | | SECTION LINE | | MODOT SHED |
| | STATE LETTERED HIGHWAY | | COUNTY BOUNDARY | | STATE BRIDGE (STRUCTURE ID) |
| | COUNTY ROAD - 509.5 MILES | | CITY LIMIT | | COUNTY BRIDGE (STRUCTURE ID) |
| | US LOOP, SPUR OR ALT. RT | | LAKE OR POND | | STATE CAPITOL |
| | CITY STREET | | FOREST OR PARK | | COUNTY SEAT |



GENERAL HIGHWAY MAP
CAPE GIRARDEAU COUNTY
Prepared by MoDOT
Transportation Planning Division

County No. 16
District SE

Scale
0 1 2 3 4 Miles